

LINEAR ACCENT SERIES

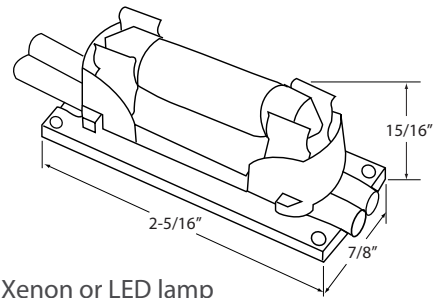
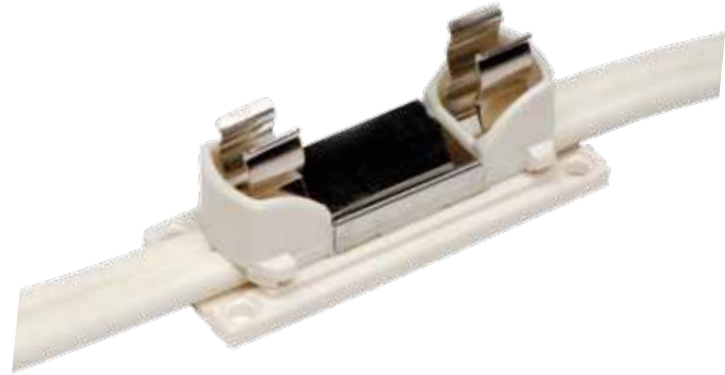
Versatile linear lighting with replaceable Xenon or LED festoon lamps

LINEAR ACCENT SERIES

Pre-assembled sockets at 3", 4" or 6" spacing saves time on the job site. Use LED Festoons for a dimmable retrofit option saving 86% (.82 watt LED versus 6 watt equivalent xenon). Use for coves, over cabinets, under cabinets, reception areas, displays, sign lighting, architectural built-ins and backlighting.

FEATURES

- 12V and 24V lamps available in Ultra Warm White (2700K LED) and xenon
- Long life, low maintenance LED festoons rated up to 60,000 hours
- Dimmable with most standard incandescent dimmers
- Built-in specular reflector optimizes light output
- Pre-assembled lamp holders at set spacing saves time on the job site
- No clips required – socket bases have mounting holes
- Easy installation – sockets snap into track for straight-line applications



Xenon or LED lamp in socket

CUSTOM CUT/REELS

FSL	–	
Linear Accent Series		3 = 3" spacing 4 = 4" spacing 6 = 6" spacing



BILL OF MATERIALS

- Determine length of area to be lighted
- Divide into runs up to 240 watts for 12V; 480 watts for 24V
- Determine total wattage and power location
- Order lead wire FSL-CABLE as necessary with FSL-BLK and FSL-BOX (recommended)
- Order transformer(s) (either 12V or 24V)
- Order length of Linear Accent Series
- Multiply length in feet by lamps per foot
- Order LED festoons or xenon lamps (12V or 24V)
- Order track for straight-line installations

ACCESSORIES

 <p>FSL-WW-12, FSL-WW-24 LED Festoon, 12V or 24V, 0.8 watt, 2700K Warm White, M.O.L. = 1-5/8"</p>	 <p>FSL-BOX Junction box for connector block FSL-BLK Connector block, 2 wire, 12 AWG max, 20 amps max</p>
 <p>FSL-5-12, FSL-10-12, FSL-5-24, FSL-10-24 Xenon, 12V, 5 watt, Clear Xenon, 12V, 10 watt, Clear Xenon, 24V, 5 watt, Clear Xenon, 24V, 10watt, Clear</p>	 <p>FSL-TRK-3 Three foot plastic mounting track, ivory</p>
 <p>FSL-5F-12, FSL-10F-12, FSL-5F-24, FSL-10F-24 Xenon, 12V, 5 watt, Frosted Xenon, 12V, 10 watt, Frosted Xenon, 24V, 5 watt, Frosted Xenon, 24V, 10watt, Frosted</p>	 <p>FSL-CABLE Linear Accent Series lead wire, 12 gauge wire, ivory</p>
 <p>MR-11-12-20, MR-11-24-20, MR-11/16A Halogen MR-11. 12V or 24V, 20 watts with glass lens/bulb cover Use with MR-11/16A swivel socket attachment</p>	 <p>FSL-END End cap for end of run FSL-COVER Clear plastic snap-on lamp cover Use with LED festoons or five watt xenon only!</p>
 <p>TRE Series Electronic transformer, enclosed 12V or 24V, dimmable, auto reset, circuit protection, 150 watts and 300 watts; For runs up to ten feet only, c/UL/us Listed</p>	 <p>TR Series Magnetic transformer, enclosed 12V or 24V, dimmable, with multiple knockouts and boost tap, c/UL/us</p>

TECHNICAL SPECIFICATIONS

Voltage	12V or 24V, 60Hz AC operation (LED festoons have DC to AC inverter on board)
Construction	Heavy-duty plastic festoon-based sockets with aluminum reflectors pre-attached to 12AWG wire (copper stranded)
Mounting	Mounting holes in socket base with appropriate fasteners (not included) or plastic mounting track
Bulk reel	100 feet
Dimensions	H = 15/16" (with lamp installed), W = 7/8" (base of socket); order custom cuts or bulk reels
Cuttability	Every 3", 4" or 6" between sockets
Light output	5 watt xenon = 28 lumens/lamp, 10 watt xenon = 63 lumens/lamp; 12/24V LED = 33 lumens/module
Wattages	Choose from 5 or 10 watt xenon or 0.82 watt LEDs
Switching	Hardwire installations require a switch leg to the primary side of the transformer
Maximum run	240 watts maximum for 12V systems; 480 watts maximum for 24V systems
Xenon specs	20,000 hours, Festoon base, 12V or 24V, Frosted (2550K) or Clear (2650K), CRI 100, 1-11/16" M.O.L.
LED specs	60,000 hours, Festoon base, 12V or 24V, 2700K, CRI 72, 1-11/16" M.O.L.
Dimmers	Compatible with most standard incandescent dimmers
Diffuser	Lens covers (FSL-COVER) sold separately