



AS201Q Astor Small Bell with Shade and Gooseneck Arm

AS20 LEDicated Astor Small Bell Gooseneck LEDlight luminaire is available with 5 Gooseneck arms of various lengths and is designed to replace HID lighting systems up to 175w MH or HPS. This decorative fixture with prismatic spread lens and glare shade is ideal for retail centers, industrial parks, schools and universities, public transit and airports, office buildings and medical facilities. Designed for architectural wall mounting up to heights of 20 feet based on light level and uniformity requirements.



AS201Q Shown with GNA01336 Arm and Platinum Color

| Dimensions | |
|-------------------|------------------|
| Base Diameter (B) | 4 1/4" (108mm) |
| Length (A) | 43 1/2" (1099mm) |
| Height (C) | 23 3/4" (591mm) |

See Page 2 for Features and Arm Dimensions

AS20Q Specifications and Features:

Housing:

Heavy Duty Die Cast Aluminum Housing with Integral Heat Sinking, 3/4" NPS Threaded Mount. Includes Spun Aluminum Shade, Field Removable.

Listing & Ratings:

CSA Listed for Wet Locations, ANSI/UL 1598, 8750 IP66 Sealed LED Compartment

Finish:

Powdercoat Finish Over a Chromate Conversion Coating. Custom Colors Available Upon Request.

Lens:

Clear Prismatic Polycarbonate Lens

Mounting:

Fixed Mount or Adjustable Swivel with 3/4" NPS Threads.

EasyLED LED:

Aluminum Boards

Wattage:

Array: 23w, System: 26.3w; (175w HID Equivalent.)

Driver:

Electronic Driver, 120-277V, 50/60Hz or 347/480V, 50/60Hz; Dimmable Driver.

Warranty:

5-Year Warranty for -40°C to +50°C Environment.

See Page 3 for Projected Lumen Maintenance Table.

Step 1: Select AS20Q Luminaire

Order Information Example:

AS201QF1X23U5KCPGNFSF

| AS201Q | F | 1X23 | U | 5K | C | | | |
|---|----------|----------|------------|----------|------------------------------|---|---|----------------------------------|
| Model | Optics | Wattage | Driver | CCT | Lens | Color | Mounting | Options |
| AS201Q= EasyLED Small Astor Bell with Shade | F=Type V | 1X23=23w | U=120-277V | 5K=5000K | C=Clear Prismatic Array Lens | B=Black, RAL9011 P=Platinum, RAL9006 R=Red, RAL3020 W=White, RAL9016 C=Custom (Consult Factory) | GNF=Fixed Downlight, Includes 72" of Wire for Arm Feed Through to Wall Box GNS=Adjustable Swivel Includes 72" of Wire for Arm Feed Through to Wall Box | SF=Single Fuse DF=Double Fuse |

L70
25°C **457,000 Hours**

Step 2: Select Arm

Order Information Example:

GNA01336PR

| Model | Length | Color | Mounting |
|--------------------------|--------------------------------------|---|--|
| GNA013 - Classic Hook | 36=36" 30=30" | B=Black, RAL9011 P=Platinum, RAL9006 R=Red, RAL3020 W=White, RAL9016 C=Custom (Consult Factory) | S=Square Oversized Wall Mount R=Round Wall Mount N=No Wall Mount |
| GNA023 - Straight | 30=30" 24=24" 18=18" 12=12" | | |
| GNA033 - Straight Offset | 30=30" 24=24" | | |
| GNA043 - Straight Rise | 30=30" | | |
| GNA053 - Round Hook | 30=30" 24=24" 18=18" | | |

Gooseneck Arm Specifications and Features:

Construction:

Heavy-Duty 3/4" Aluminum Arms with 3/4" NPS Threads on Fixture Mounting End.

Finish:

Powdercoat Finish Over a Chromate Conversion Coating. Custom Colors Available Upon Request.

Mounting Options:

Mount with 3/4" Square or Round Mounting Plates.

Specification Guide:

AS201Q Fixture + Arm = Complete Unit

Project Information:

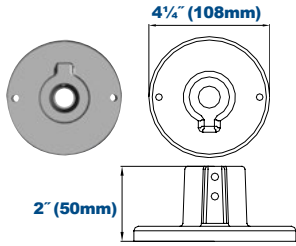
Project Name: _____ Fixture Type: _____
 Complete Catalog #: _____ Date: _____
 Comments: _____

Certification & Listings:

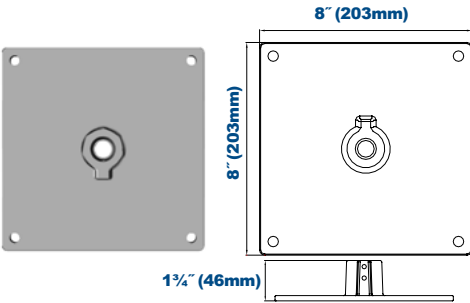




Wall Plate Dimensions



GNRMP3



GNSMP3

**Replacement Wall Plates
 (Order separately, Field installed)**

GNRMP3* Round Wall Mount Plate, Powdercoat Finish.

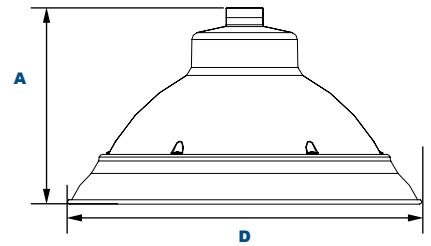
GNSMP3* Square Oversized Wall Mount Plate, Powdercoat Finish.

*Specify Color: B=Black, P=Platinum, R=Red, W=White, C=Custom (Consult Factory)

AS201Q Dimensions



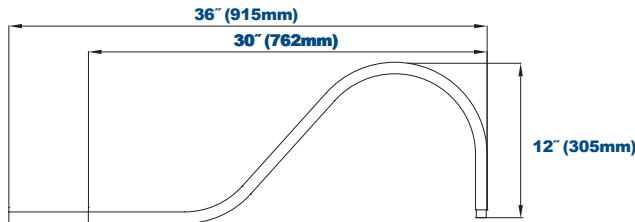
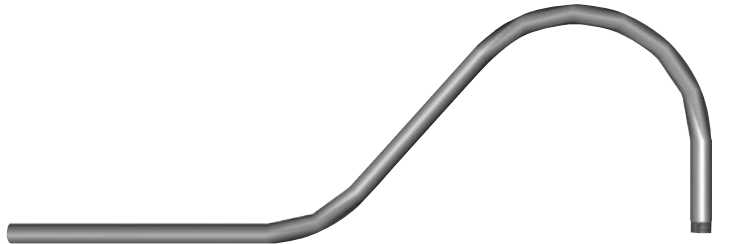
Astor Small Bell



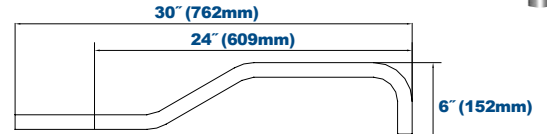
Dimensions

| | |
|---------------------|-----------------|
| Diameter (D) | 15 1/4" (386mm) |
| Height (A) | 8 1/2" (214mm) |

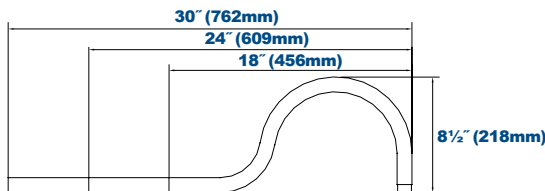
Gooseneck Dimensions



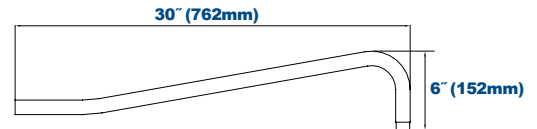
GNA01336P Classic Hook



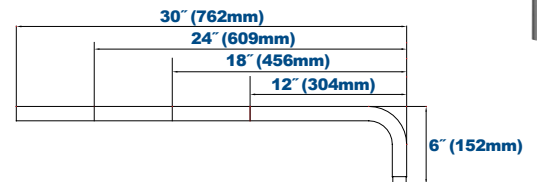
GNA03330P Straight Offset



GNA05336P Round Hook



GNA04330P Straight Rise

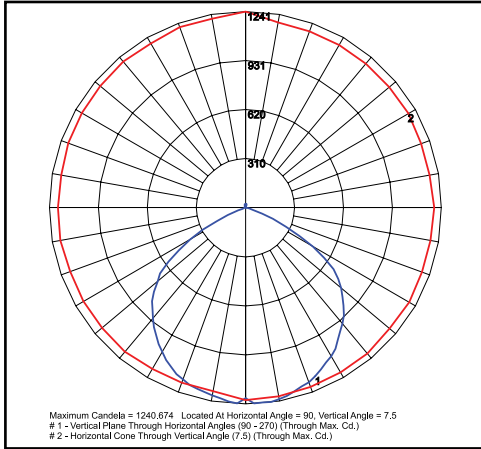


GNA02330P Straight

Specifications subject to change without notice. Rev. 111017



Photometric Data



AS201QF1X23U5KC - Type V

Grid in MH
 MH=10 Feet

Photometric Performance

| LED Board Watts | Drive Current (mA) | Input Watts | Optics | 5000 CCT 80 CRI | | | | |
|-----------------|--------------------|-------------|-------------------------------|-----------------|-----|---|---|---|
| | | | | Lumens | LPW | B | U | G |
| EasyLED 23w | 525 | 26 | Type V (Clear Prismatic Lens) | 3,022 | 116 | 1 | 2 | 0 |

Projected Lumen Maintenance

| Data shown for 5000 CCT | Input Watts | Compare to MH | | | | |
|---|-------------|---------------|------------|------------|-------------|----------------------|
| | | Initial | 25,000 Hrs | 50,000 Hrs | 100,000 Hrs | Calculated L70@ 25°C |
| TM-21-11 | | | | | | |
| L70 Lumen Maintenance @ 25°C / 77°F | 26 | 1.00 | 0.98 | 0.97 | 0.93 | 457,000 |
| TM-21-11 | | | | | | |
| L70 Lumen Maintenance @ 50°C / 122°F | 26 | 1.00 | 0.97 | 0.95 | 0.89 | 273,000 |
| TM-21-11 | | | | | | |
| L80 Lumen Maintenance @ 40°C / 104°F | 26 | 1.00 | 0.98 | 0.95 | 0.90 | 206,000 |

NOTES:

1. Projected per IESNA TM-21-11. Data references the extrapolated performance projections for the 525mA base model in a 25°C ambient, based on 10,000 hours of LED testing per IESNA LM-80-08.
2. Compare to MH box indicates suggested Light Loss Factor (LLF) to be used when comparing to Metal Halide (MH) systems.