

Bollard Series

Dome Bollard with Louvers



BOL3

Housing:

Extruded Aluminum Housing with Flush Mounting Base & Vandal-Resistant Screws, Domed Top, Powdercoat Finish Over a Chromate Conversion Coating, Internal Ballast Tray for Easy Maintenance

Reflector:

Cast Aluminum Louvers

Lens:

Clear Polycarbonate Vandal-Resistant Lens

Socket:

HID: Porcelain 4KV Pulse Rated Medium Base Socket with Nickel Plated Screw Shell

PL: Plug-In Type, GX24Q-4

Mounting:

Mounting Kit with 8" Anchor Bolts (Included)

Wattage:

High Pressure Sodium: 35 to 100w

Metal Halide: 70 to 100w

Compact Fluorescent: 1 x 42 to 57w

Listing & Ratings:

CSA: Listed for Wet Locations

Options:

GFCI Outlet, 15A, 120V

Glare Shield

Other Wattages & Custom Colors Available
Upon Request.

Bollards Can Be Cut To Custom Lengths
Upon Request.

KELSEY-KANE LIGHTING MFG. CO.

Voice & Text: 954-772-3187

E-Mail: info@kelsey-kane.com

Website: www.kelsey-kane.com

Kit(s)				
Catalog #	Description			
BOL3*◆#	Dome Bollard with Louvers, HID Kit			
BOL3F*◆#	Dome Bollard with Louvers, Single Fluorescent Kit			
Complete Units (Lamp Included)				
Catalog #	Wattage	Voltage	Lamp	Ballast
BOL3H35R120L*◆#	35	120	HPS	R-NPF
BOL3H50R120L*◆#	50	120	HPS	R-NPF
BOL3H70R120L*◆#	70	120	HPS	R-NPF
BOL3H100R120L*◆#	100	120	HPS	R-NPF
BOL3H70QL*◆#	70	Quad	HPS	HX-HPF
BOL3H100QL*◆#	100	Quad	HPS	HX-HPF
BOL3M70QL*◆#	70	Quad	MH	HX-HPF
BOL3M100QL*◆#	100	Quad	MH	HX-HPF
BOL3F42EL*◆#	1 x 42	120-277	PL	Electronic
BOL3F57EL*◆#	1 x 57	120-277	PL	Electronic

*Specify Color: BZ=Bronze, BK=Black

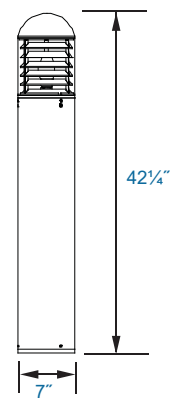
◆Add GF1 for GFCI Outlet, 15A, 120V

#Specify Glare Shield: GSB=180° Glare Shield, Black; GSZ=180° Glare Shield, Bronze; GSC=180° Glare Shield, Custom Color (Consult Factory)



Also Available in LED.

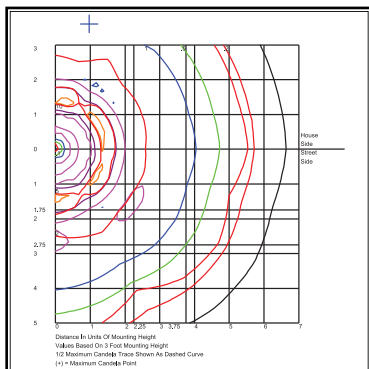
DIMENSIONS



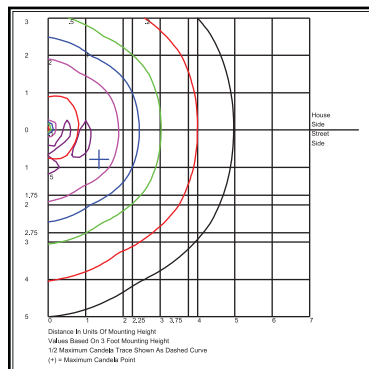
BOL3

Catalog #	Description
BOLAN4	Mounting Kit, Includes Bracket & Three (3) 4" Anchor Bolts
BOLAN8	Mounting Kit, Includes Bracket & Three (3) 8" Anchor Bolts
BOLAN12	Mounting Kit, Includes Bracket & Three (3) 12" Anchor Bolts
BOLAN15	Mounting Kit, Includes Bracket & Three (3) 15" Anchor Bolts
BOLPC	Replacement Round Polycarbonate Vandal-Resistant Lens
BOLRM	Root Mount Kit
BORBASE*	Die Cast Base Plate with Powdercoat Finish Over a Chromate Conversion Coating
BREBASE*	Bollard Retrofit Base Kit Adapts New Bollards to Most Existing Bolt Patterns. Fits all LEPG Bollards. Die Cast with Powdercoat Finish, Hardware Included. 11½" Dia. x 1½" H"
BOADP1	Adapter Plate with Gaskets for Outlet Boxes. Fits LEPG Round Bollards. Die Cast with Bronze Powdercoat Finish.

*Specify Color: Z=Bronze, B=Black



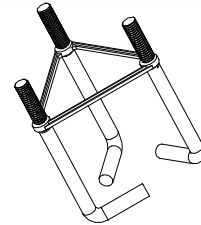
BOL3M100



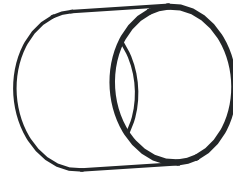
BOL3F42EL

Bollard Series

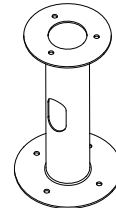
Dome Bollard with Louvers



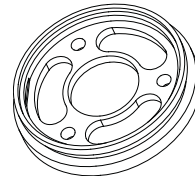
BOLAN



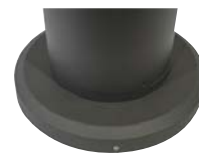
BOLPC



BOLRM



BORBASE



BREBASE



BOADP1

KELSEY-KANE LIGHTING MFG. CO.
 Voice & Text: 954-772-3187
 E-Mail: info@kelsey-kane.com
 Website: www.kelsey-kane.com