

FL20L Shown with GNA01336 Arm and Custom Color

Dimensions

Base Length (B1)	8" (203mm)
Base Height (B2)	8" (203mm)
Length (A)	37" (939mm)
Height (C)	19 3/4" (400mm)

**See Page 2 for
Fixture and Arm
Dimensions**

Step 1: Select FL20 Luminaire

Order Information Example: **FL20L1X18U5KCGNK**

FL20	1X18	U			GNK
Model	Wattage	Driver	CCT	Color	Mounting

FL20L =Small LED Flood	1X18 =18w	U =120-277V	4K =4000K 5K =5000K	B =Black, RAL9011 P =Platinum, RAL9006 R =Red, RAL3020 W =White, RAL9016 C =Custom (Consult Factory)	GNK =1/2" NPS Knuckle with Fittings and 72" of Wire for Arm Feed Through to Wall Box
-------------------------------	------------------	--------------------	--------------------------------------	---	---

Step 2: Select Arm

Order Information Example: **GNA01336CS**

Model	Length	Color	Mounting
GNA013 Classic Hook	36=36" 30=30"	B =Black, RAL9011 P =Platinum, RAL9006 R =Red, RAL3020 W =White, RAL9016 C =Custom (Consult Factory)	S =Square Oversized Wall Mount R =Round Wall Mount N =No Wall Mount
GNA023 Straight	30=30" 24=24" 18=18" 12=12"		
GNA033 Straight Offset	30=30" 24=24"		
GNA043 Straight Rise	30=30"		
GNA053 Round Hook	30=30" 24=24" 18=18"		

Specification Guide:

FL20L Fixture + Arm = Complete Unit

Project Information:

Project Name: _____ Fixture Type: _____

Complete Catalog #: _____ Date: _____

Comments: _____

FL20L **L70** **25°C** **128,000 Hours**
LED Small Flood Light with Gooseneck Arm

FL20 Gooseneck LEDlight flood luminaire is available with 5 Gooseneck arms of various lengths and is designed to replace HID lighting systems up to 70w MH or HPS. Typical lighting applications include retail centers, industrial parks, schools and universities, public transit and airports, office buildings and medical facilities. Designed for architectural wall mounting up to heights of 20 feet based on light level and uniformity requirements

FL20L Specifications and Features:

Housing:

Die Cast Aluminum Housing and Front Frame with Separate Ballast Compartment. Integral Heat-Dissipating Fins for Thermal Management. 1/2" Threaded Aperture with Liquid-Tight Connector.

Listing & Ratings:

CSA: Listed for Wet Locations, ANSI/UL 1598, 8750. IP65 Sealed LED Compartment.

Finish:

Powdercoat Finish Over a Chromate Conversion Coating. Custom Colors Available Upon Request.

Lens:

Clear Flat Glass Lens.

Mounting:

Adjustable Knuckle with 1/2" NPS Threads.

COB LED:

LED COB

Wattage:

LED: 1 x 18w; System: 21w (70w HID Equivalent)

Driver:

Electronic Driver, 120-277V, 50/60Hz

Wararnty:

5-Year Warranty for -30 to 50°C Environment.

LM-79 Report Available on Select Models.

See Page 3 for Projected Lumen Maintenance Table.

Gooseneck Arm Specifications and Features:

Construction:

Heavy-Duty 3/4" Aluminum Arms with 1/4" NPS Threads on Fixture Mounting End.

Finish:

Powdercoat Finish Over a Chromate Conversion Coating. Custom Colors Available Upon Request.

Mounting Options:

Mount with 3/4" Square or Round Mounting Plates.

Certification & Listings:



FL20L LED Small Flood Light with Gooseneck Arm

Accessories & Replacement Parts:



FL20GTF*



GNSMP3



GNRMP3

**Accessories
(Order separately, Field installed)**

FL20GTF* Aluminum Glare Shield, Powdercoat Finish, Includes Hardware.

**Replacement Parts
(Order separately, Field installed)**

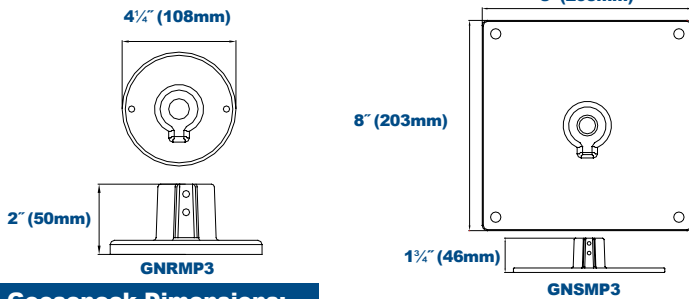
GNRMP3* Round Wall Mount Plate, Powdercoat Finish.

GNSMP3* Square Oversized Wall Mount Plate, Powdercoat Finish.

*Specify Color: B=Black, P=Platinum, R=Red, W=White, C=Custom (Consult Factory)

*Shown mounted.

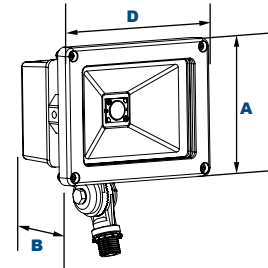
Wall Plate Dimensions:



FL20L LED Small Flood Dimensions:



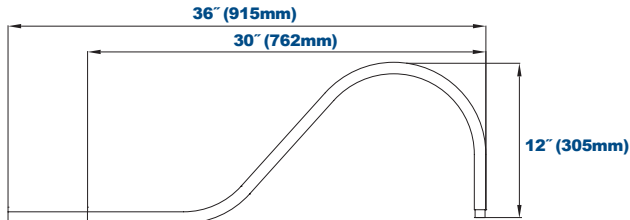
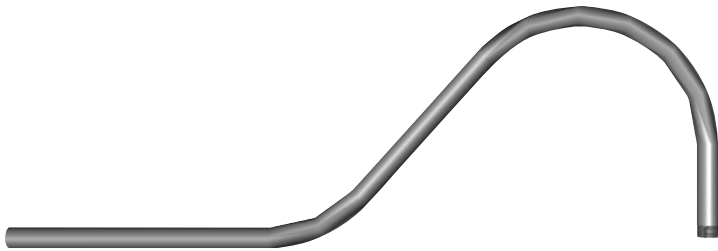
FL20L LED Small Flood Dimensions



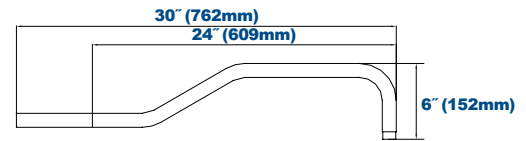
Dimensions

Width (D)	6 3/4" (172mm)
Length (B)	4 3/8" (113mm)
Height (A)	5 1/4" (133mm)

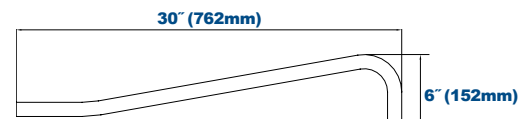
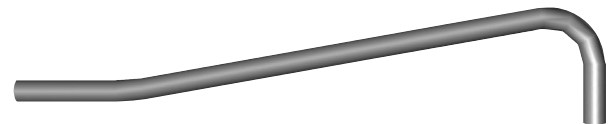
Gooseneck Dimensions:



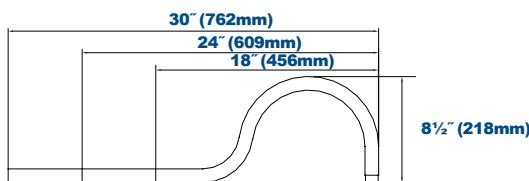
GNA01336P Classic Hook



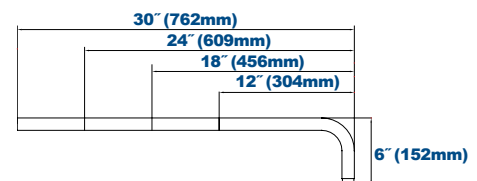
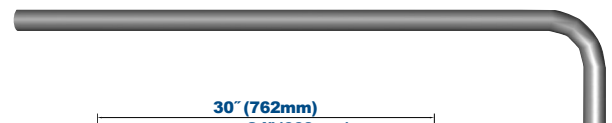
GNA03330P Straight Offset



GNA04330P Straight Rise



GNA05330P Round Hook

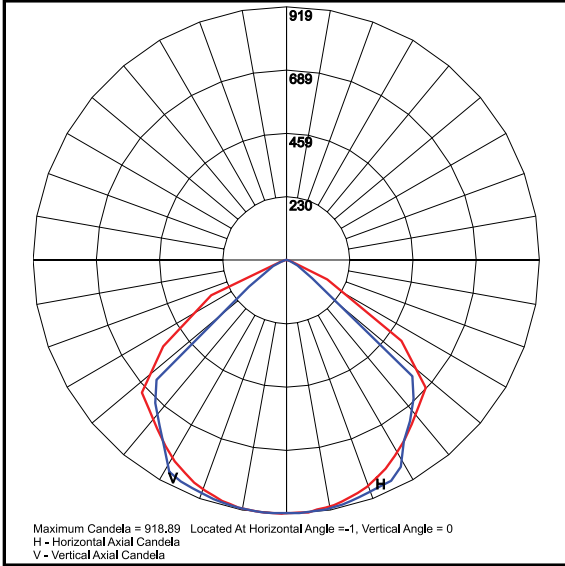


GNA02330P Straight

Specifications subject to change without notice. Rev. 101717

FL20L LED Small Flood Light with Gooseneck Arm

Photometric Data



FL20L1X18U5K
 115°H x 100°V, NEMA 7H x 6V

Photometric Performance

LED Board Watts	Drive Current (mA)	Input Watts	Beam	5000 CCT 80 CRI	
				Lumens	LPW
COB LED 18w	525	21	115°H x 100°V, NEMA 7H x 6V	2,324	111

Projected Lumen Maintenance

Data shown for 5000 CCT	Compare to MH						
	TM-21-11	Input Watts	Initial	25,000 Hrs	50,000 Hrs	100,000 Hrs	Calculated L70@ 25°C
L70 Lumen Maintenance @ 25°C / 77°F	TM-21-11	21	1.00	0.94	0.88	0.77	128,000
L70 Lumen Maintenance @ 50°C / 122°F	TM-21-11	21	1.00	0.92	0.83	0.66	89,000
L80 Lumen Maintenance @ 40°C / 104°F	TM-21-11	21	1.00	0.93	0.86	0.72	71,000

NOTES:

1. Projected per IESNA TM-21-11. Data references the extrapolated performance projections for the 525mA base model in a 25°C ambient, based on 10,000 hours of LED testing per IESNA LM-80-08.
2. Compare to MH box indicates suggested Light Loss Factor (LLF) to be used when comparing to Metal Halide (MH) systems.